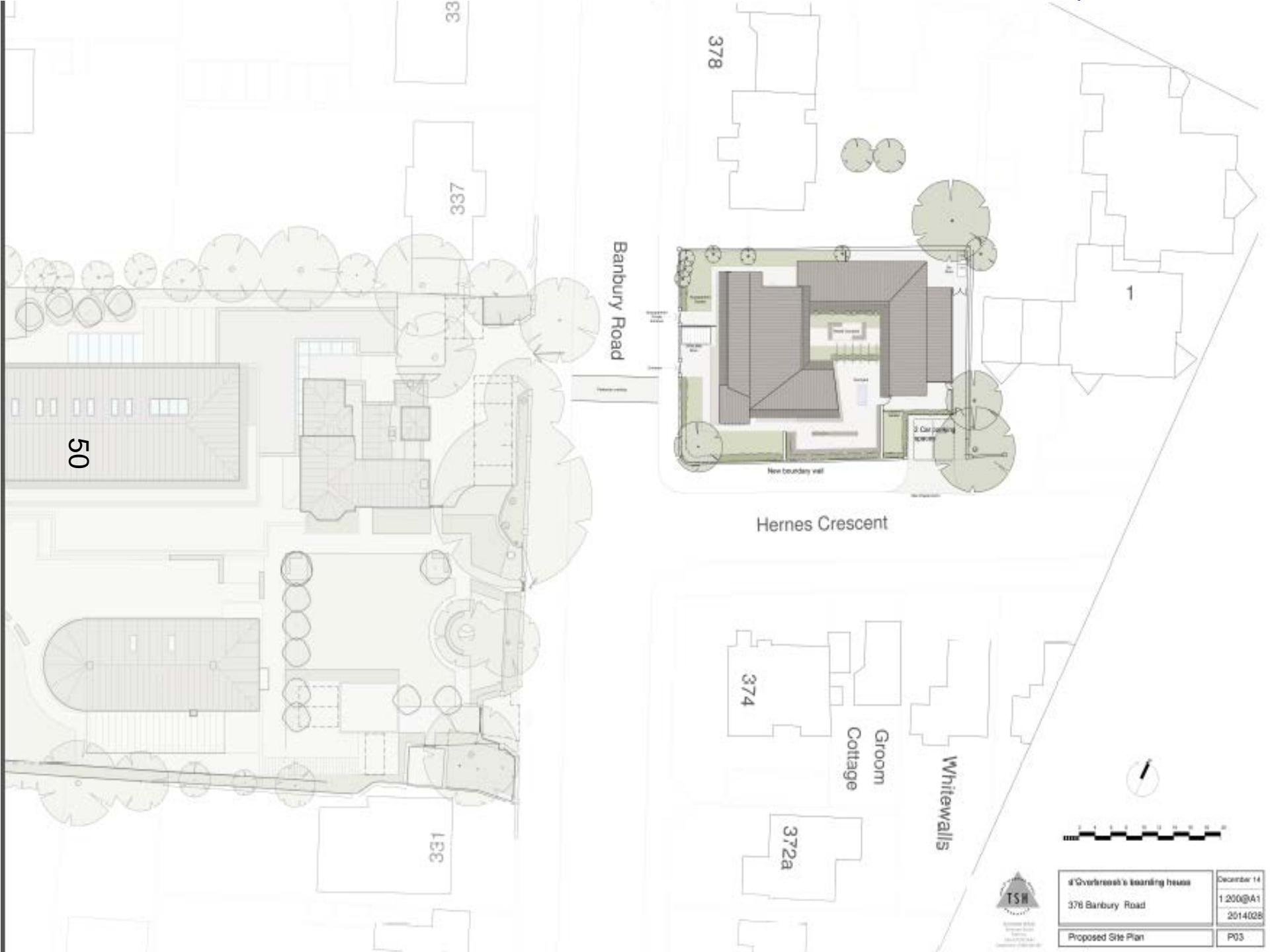
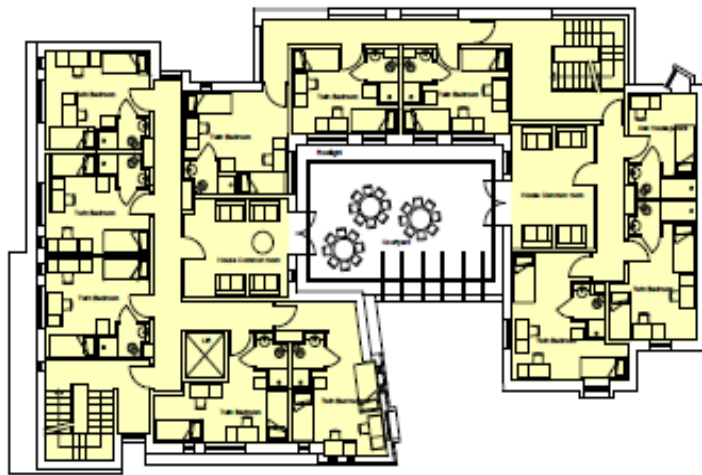


# Welcome to the West Area Planning Committee

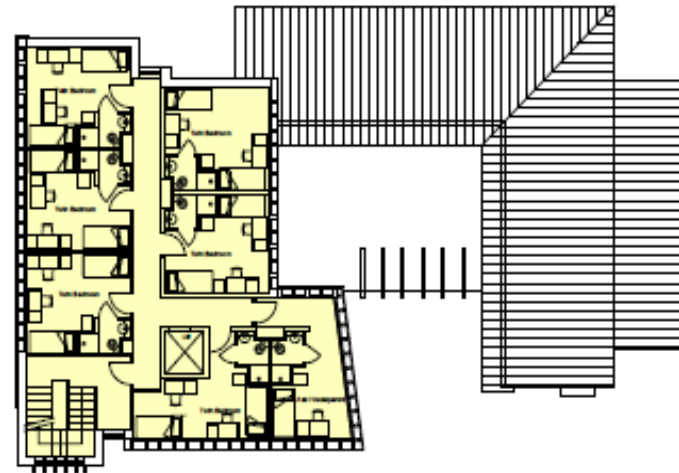
- This planning committee meeting is held in public but it is not a public meeting.
- There will be an opportunity for the public to address the committee on each application.
- If you wish to speak for or against a planning application, you need to have either requested it in advance, or hand in one of the available speaker forms, or speak to the clerk.
- Information on meeting protocol and conduct at the committee is set out in the Code of Practice.
- This is in the committee agenda just before the first planning application report.



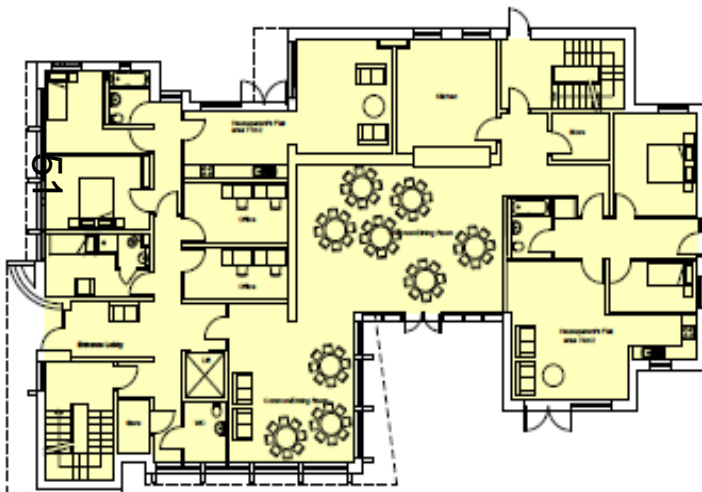




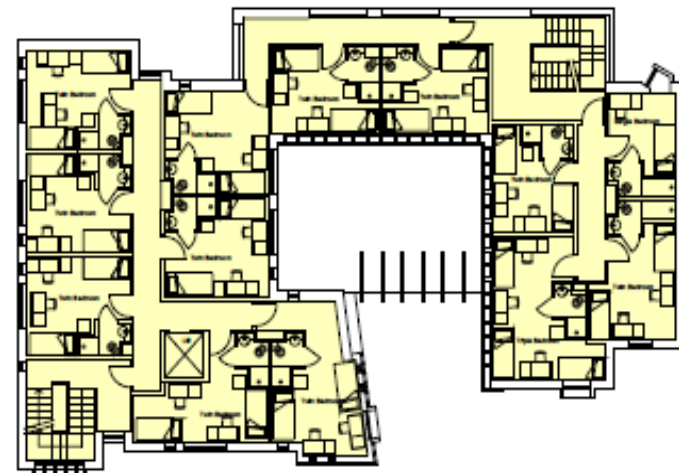
First floor plan



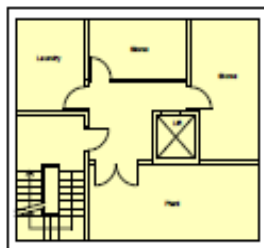
Third floor plan



Ground floor plan



Second floor plan



Basement plan

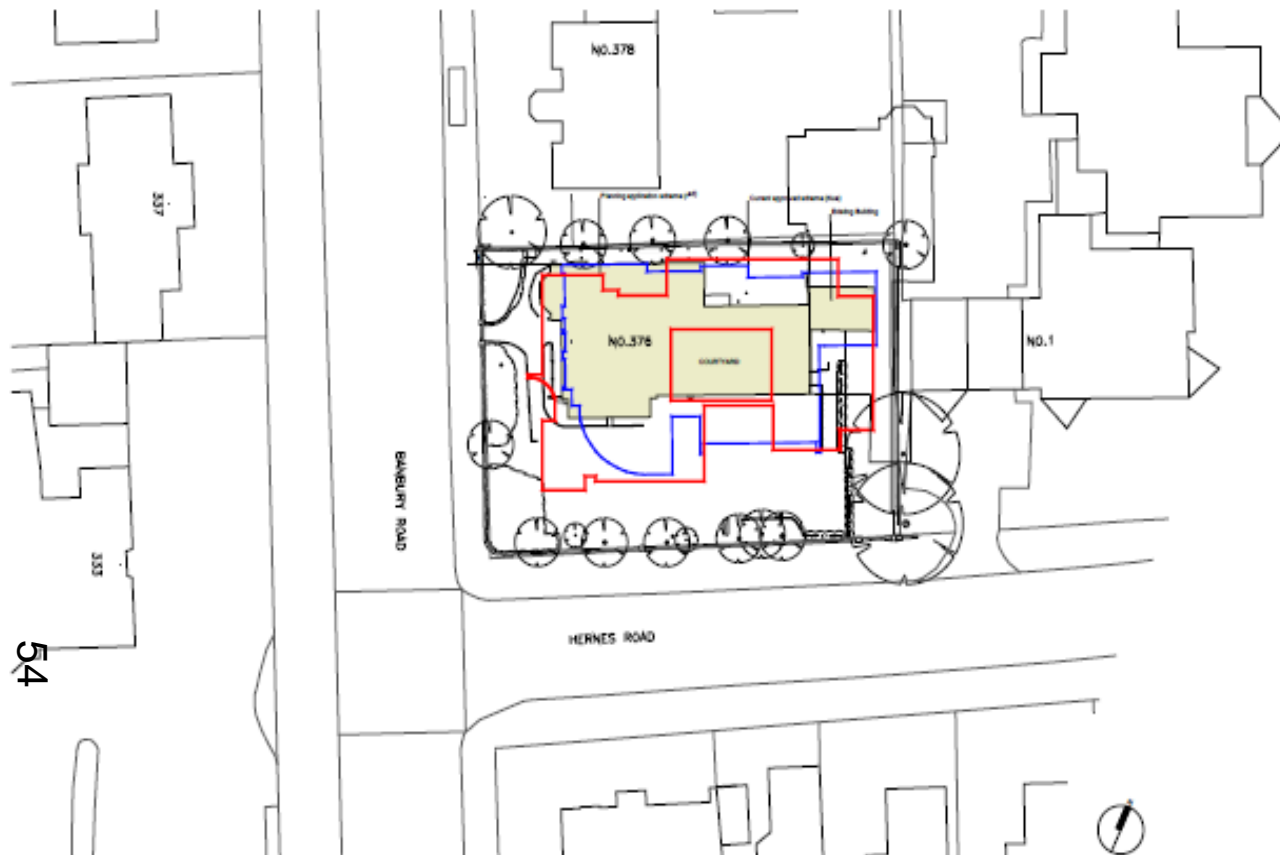


d'Overbroeck's Boarding House 376 Barbury Road	December 14 1:100@A1 2014028
Proposed Plans	P04





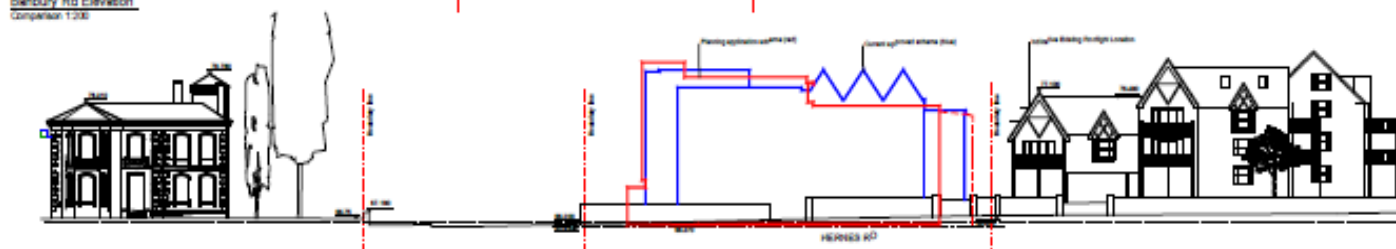




Site Plan  
Comparison 1:200



Barbury Rd Elevation  
Comparison 1:200



Hernes Rd Elevation  
Comparison 1:200



d'Overbroeck's Boarding House	December 14
376 Barbury Road	No. shown as A1
Comparison drawing	20140226
	P08



Location Plan  
Scale 1:100



Block Plan  
Scale 1:50





**OXFORD  
CITY  
COUNCIL**







**OXFORD  
CITY  
COUNCIL**





[www.oxford.gov.uk](http://www.oxford.gov.uk)







[www.oxford.gov.uk](http://www.oxford.gov.uk)











61

superfast fibre  
openreach

openreach

HERN ROAD

20





62





63





64

openreach

a BT Group business



Connecting the Nation  
to Phone, Broadband  
and TV services





65

WILMINGTON  
Public House  
Wilmington  
Wilmington





66

66  
000



# Randolph House

## Randolph House

Private parking  
for residents only.  
No visitor parking.

  
PRIVATE CAR PARK  
FOR RESIDENTS USE ONLY  
UNAUTHORISED OR  
UNLAWFUL PARKED VEHICLES  
WILL BE IMPROBATED



68



PROSCAN

LED TV  
46"  
PLOED4616-UK

LED HDTV  
SUPER SLIM EDGE

1000P  
3000Hz





WARNING  
Concealed CCTV  
cameras operate on  
these premises

376

69

This page is intentionally left blank